

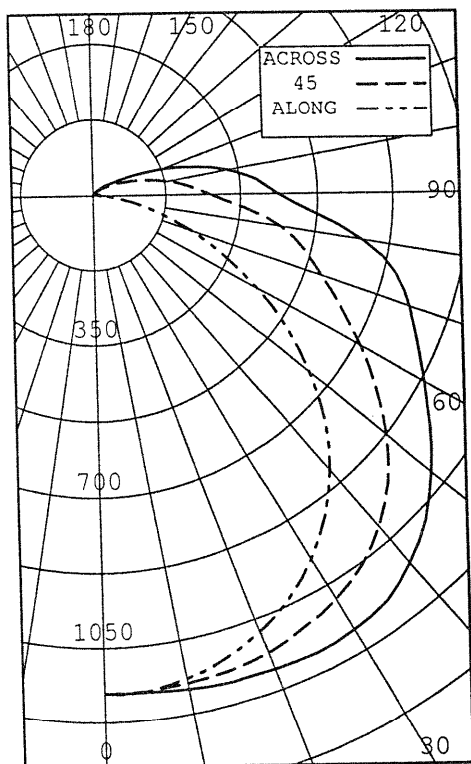
CERTIFIED TEST REPORT No.

17420

PRUDENTIAL LIGHTING - 4' WATER TIGHT LUMINAIRE, CAT# 8-5360-2T8-04-PRA-SC-120V
WITH WHITE INTERIOR AND CLEAR TEXTURED PLASTIC WRAP LENS
TWO PHILIPS 32 WATT T8 LAMPS, CAT# F32T8/TL841. LUMEN RATING = 3000 LMS.
ONE ADVANCE REL-2P32SC BALLAST OPERATING AT 120 VAC AND 62 WATTS

CANDLEPOWER SUMMARY

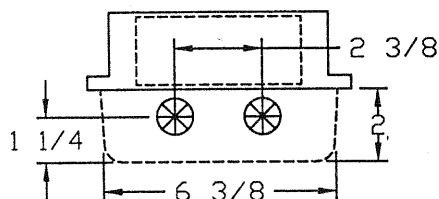
OUTPUT
LUMENS



ANGLE	ALONG	22.5	45	67.5	ACROSS	
0	1157	1157	1157	1157	1157	
5	1156	1156	1156	1156	1159	112
15	1115	1125	1146	1164	1174	323
25	1035	1063	1111	1158	1178	512
35	914	965	1056	1130	1157	653
45	750	823	951	1039	1074	717
55	546	647	794	905	947	691
65	340	453	632	774	829	607
75	166	294	511	677	728	506
85	47	170	356	485	518	355
90	20	116	277	393	433	
95	19	88	230	344	389	235
105	11	49	138	220	250	143
115	3	22	68	98	111	63
125	0	7	31	46	49	24
135	0	0	11	21	23	9
145	0	0	3	6	10	3
155	0	0	0	0	0	0
165	0	0	0	0	0	0
175	0	0	0	0	0	0
180	0	0	0	0	0	

ZONE	LUMENS	% LAMP	% LUMINAIRE
0-30	947	15.79	19.12
0-40	1600	26.67	32.31
0-60	3008	50.14	60.74
0-90	4476	74.61	90.39
40-90	2876	47.93	58.07
60-90	1468	24.47	29.65
90-180	476	7.94	9.61
0-180	4952	82.54	100.00

** EFFICIENCY: 82.5% **



LUMINANCE SUMMARY - CD./SQ.M.

ANGLE	ALONG	45	ACROSS
45	5169	5414	5793
55	4565	5116	5687
65	3761	4856	5819
75	2841	5043	6373
85	1899	5174	6285

PAINT REFLECTANCE: .82 , S/MH: 1.5
SC(ALONG): 1.3, SC(ACROSS): 1.5

CERTIFIED BY:

Jan Lewin DATE: DEC 26, 2002
PREPARED FOR:
PRUDENTIAL LIGHTING CORP.
LOS ANGELES, CA

TESTED IN ACCORDANCE WITH IES PROCEDURES.

LIGHTING SCIENCES
7830 E. EVANS RD.
SCOTTSDALE, AZ, USA 85260

CERTIFIED TEST REPORT No.

17420

PRUDENTIAL LIGHTING - 4' WATER TIGHT LUMINAIRE, CAT# 8-5360-2T8-04-PRA-SC-120V
WITH WHITE INTERIOR AND CLEAR TEXTURED PLASTIC WRAP LENS
TWO PHILIPS 32 WATT T8 LAMPS, CAT# F32T8/TL841. LUMEN RATING = 3000 LMS.
ONE ADVANCE REL-2P32SC BALLAST OPERATING AT 120 VAC AND 62 WATTS

CANDLEPOWER DATA

ANGLE	PLANE						OUTPUT LUMENS
	ALONG	22.5	45	67.5	ACROSS	AVERAGE	
0	1157	1157	1157	1157	1157	1157	
5	1156	1156	1156	1156	1159	1156	112
10	1140	1144	1152	1161	1166	1152	
15	1115	1125	1146	1164	1174	1145	323
20	1080	1099	1134	1162	1174	1130	
25	1035	1063	1111	1158	1178	1110	512
30	980	1020	1088	1148	1171	1083	
35	914	965	1056	1130	1157	1047	653
40	836	900	1010	1093	1122	996	
45	750	823	951	1039	1074	931	717
50	650	734	877	973	1013	854	
55	546	647	794	905	947	773	691
60	443	546	712	835	884	689	
65	340	453	632	774	829	611	607
70	248	369	565	727	783	544	
75	166	294	511	677	728	482	506
80	98	227	447	596	637	409	
85	47	170	356	485	518	323	355
90	20	116	277	393	433	253	
95	19	88	230	344	389	217	235
100	16	63	186	276	325	174	
105	11	49	138	220	250	134	143
110	7	34	98	152	174	93	
115	3	22	68	98	111	61	63
120	2	14	46	64	69	40	
125	0	7	31	46	49	27	24
130	0	1	20	30	33	17	
135	0	0	11	21	23	11	9
140	0	0	8	14	15	7	
145	0	0	3	6	10	3	3
150	0	0	0	3	4	1	
155	0	0	0	0	0	0	0
160	0	0	0	0	0	0	
165	0	0	0	0	0	0	0
170	0	0	0	0	0	0	
175	0	0	0	0	0	0	0
180	0	0	0	0	0	0	

LIGHTING SCIENCES
7830 E. EVANS RD.
SCOTTSDALE, AZ, USA 85260

CERTIFIED TEST REPORT No.

17420

PRUDENTIAL LIGHTING - 4' WATER TIGHT LUMINAIRE, CAT# 8-5360-2T8-04-PRA-SC-120V
WITH WHITE INTERIOR AND CLEAR TEXTURED PLASTIC WRAP LENS
TWO PHILIPS 32 WATT T8 LAMPS, CAT# F32T8/TL841. LUMEN RATING = 3000 LMS.
ONE ADVANCE REL-2P32SC BALLAST OPERATING AT 120 VAC AND 62 WATTS

AVERAGE LUMINANCE DATA

CD./SQ.M. (FOOTLAMBERTS)

ANGLE	ALONG	22.5	45	67.5	ACROSS
0	5858 (1709)	5858 (1709)	5858 (1709)	5858 (1709)	5858 (1709)
30	5602 (1635)	5466 (1595)	5539 (1616)	5674 (1656)	5742 (1676)
40	5353 (1562)	5248 (1531)	5474 (1597)	5700 (1663)	5797 (1692)
45	5169 (1508)	5072 (1480)	5414 (1580)	5641 (1646)	5793 (1690)
50	4894 (1428)	4859 (1418)	5262 (1535)	5550 (1619)	5712 (1667)
55	4565 (1332)	4635 (1352)	5116 (1493)	5487 (1601)	5687 (1659)
60	4203 (1226)	4326 (1262)	4954 (1446)	5437 (1586)	5677 (1657)
65	3761 (1097)	4019 (1173)	4856 (1417)	5501 (1605)	5819 (1698)
70	3320 (968)	3776 (1102)	4864 (1419)	5716 (1668)	6049 (1765)
75	2841 (829)	3582 (1045)	5043 (1472)	6028 (1759)	6373 (1860)
80	2332 (680)	3451 (1007)	5244 (1530)	6142 (1792)	6432 (1877)
85	1899 (554)	3443 (1004)	5174 (1510)	6024 (1758)	6285 (1834)

LIGHTING SCIENCES
7830 E. EVANS RD.
SCOTTSDALE, AZ, USA 85260

CERTIFIED TEST REPORT No.

17420

PRUDENTIAL LIGHTING - 4' WATER TIGHT LUMINAIRE, CAT# 8-5360-2T8-04-PRA-SC-120V
WITH WHITE INTERIOR AND CLEAR TEXTURED PLASTIC WRAP LENS
TWO PHILIPS 32 WATT T8 LAMPS, CAT# F32T8/TL841. LUMEN RATING = 3000 LMS.
ONE ADVANCE REL-2P32SC BALLAST OPERATING AT 120 VAC AND 62 WATTS

COEFFICIENTS OF UTILIZATION

ZONAL CAVITY METHOD

EFFECTIVE FLOOR CAVITY REFLECTANCE = .20

CC WALL	80				70				50				30				10				0
	70	50	30	10	70	50	30	10	50	30	10	50	30	10	50	30	10	50	30	10	0
RCR																					
0	.96	.96	.96	.96	.93	.93	.93	.93	.87	.87	.87	.82	.82	.82	.77	.77	.77	.75			
1	.86	.82	.77	.74	.83	.79	.75	.72	.74	.71	.68	.69	.67	.64	.65	.63	.61	.59			
2	.78	.70	.64	.59	.75	.68	.62	.57	.63	.59	.55	.60	.56	.52	.56	.53	.50	.48			
3	.71	.61	.54	.48	.68	.59	.53	.47	.56	.50	.46	.52	.48	.44	.49	.45	.42	.40			
4	.64	.54	.46	.40	.62	.52	.45	.40	.49	.43	.38	.46	.41	.37	.44	.39	.36	.33			
5	.59	.47	.40	.34	.56	.46	.39	.33	.43	.37	.32	.41	.35	.31	.38	.34	.30	.28			
6	.54	.42	.34	.29	.52	.41	.34	.28	.39	.32	.28	.36	.31	.27	.34	.30	.26	.24			
7	.49	.38	.30	.25	.48	.37	.30	.25	.35	.28	.24	.33	.27	.23	.31	.26	.22	.20			
8	.45	.34	.27	.21	.44	.33	.26	.21	.31	.25	.20	.29	.24	.20	.28	.23	.19	.17			
9	.42	.30	.23	.18	.40	.30	.23	.18	.28	.22	.18	.26	.21	.17	.25	.20	.16	.15			
10	.39	.28	.21	.16	.38	.27	.20	.16	.25	.20	.15	.24	.19	.15	.23	.18	.14	.13			

LUMINAIRE INPUT WATTS = 62.0

AS

LABORATORY RESULTS MAY NOT BE REPRESENTATIVE OF FIELD PERFORMANCE.

BALLAST AND FIELD FACTORS HAVE NOT BEEN APPLIED.